

GRAND TRAVERSE COUNTY ROAD COMMISSION



REQUEST FOR BID PROPOSAL AND QUALIFICATIONS

FOR THE INSTALL OF A NEW SECURITY CAMERA SYSTEM

The Grand Traverse County Road Commission intends to contract with a Company to manage the installation of a security camera system at the Traverse City and the Kingsley locations. Companies wishing to submit a bid and qualifications statement to perform this work must deliver their Bid to the GTCRC office by **2:00 PM November 06, 2024.**

Office: **Grand Traverse County Road Commission**
1881 Lafranier Rd
Traverse City, MI 49696

The GTCRC reserves the right to reject all submittals, waive any irregularities, and accept those that the Board believes to be in its best interest, all factors considered.

PROJECT SUMMARY

Grand Traverse County needs to install a new camera system for the 1881 Lafranier, Traverse City, and the 2408 M-113 Kingsley facility. The Lafranier facility was built in December of 2001, while the Kingsley facility is a new build that will be ready for occupancy in December of 2024. The vendor will be responsible for installation, setup, training, and software\hardware installation. The vendor will supply software, parts, and labor. The Vendor will supply and install all necessary wiring and hardware for camera connections. There are a few camera locations at each facility that may need a wireless connection.

SCOPE OF WORK

The scope of work required under this RFP includes the procurement of the security cameras and associated equipment (including software), design, installation, implementation, configuration, testing, and training. The selected Vendor will be responsible for recommending the type of security cameras, and any other applicable equipment, hardware, and software associated with the security cameras. The security video camera management system recommended by the Vendor for these facilities must have the following features:

- Centralized management system with secured access.
- It can be viewed from a computer via a web browser and from a cellular telephone.
- Show historical video while recording, hold historical data for a minimum of 90 days.
- Ability to download video.
- Record on motion and adjust to daylight and nighttime vision.
- Monitor the entire identified area at each location.
- Allow future growth of the system to accommodate additional cameras and locations.
- High-definition cameras capable of viewing fine details.
- Secured access for authorized staff only, with internal ability to set access permissions.
- Non-proprietary system to ensure secured access during and beyond the life of the contract.

All installations will be coordinated with the GTCRC Fleet and Facilities Manager and Superintendent.

Security Camera System Requirements

1. 8-megapixel wide view, interior Cameras
2. 8-megapixel wide view, exterior Cameras
3. 32-Channel commercial camera capability
4. Waterproof (exterior cameras)
5. Sound Recording
6. Point-to-point network bridges or mesh wireless setup to meet all needs
7. All controls and storage of data shall have the ability to be on-premise and in a cloud-based environment.
8. Will be able to remote into and control cameras via computer, tablet, or smartphone.
9. 24/7 support is a must.
10. Upon review of the qualification statements, GTCRC may request companies to make an oral presentation.

REQUIRED INFORMATION

Companies are invited to indicate their interest in this project by responding to this bid with a Letter of Interest, along with a description of their company's qualifications. Submittals should address the following items.

1. Qualifications to perform the work including experience with projects of similar design and function.
2. Prior experience of the project manager and other key personnel. Evidence of customer satisfaction, with projects involving the project manager. List names and telephone numbers of references.
3. Approach to this project including preliminary schedule of major milestones, quality assurance systems, security of construction site, and communication procedures.
4. Parts, labor, and any other cost to furnish, and install a security camera system for each location separately.
5. Name, address, email, and phone number (including cell number) of the contact person that will represent the company
6. Organizational chart showing the role of key personnel.
7. On-site walk-around and project review is required - any bidder that does not do the walk-around will be rejected.

SUBMITTAL OF QUALIFICATION STATEMENTS

Four (4) copies of the requested information should be prepared and must arrive at the GTCRC's office no later than **2:00 PM November 06, 2024**. Information should be addressed to:

Larry LaCross, Superintendent
Grand Traverse County Road Commission
1881 Lafranier Rd
Traverse City, Mi 49696

EVALUATION OF QUALIFICATION STATEMENTS

In evaluating the responses to this Bid, the Grand Traverse County Road Commission reserves the right, in its exclusive opinion, to select the company or companies that are the most qualified for this project. Upon review of the qualification statements, GTCRC may request companies to make an oral presentation.

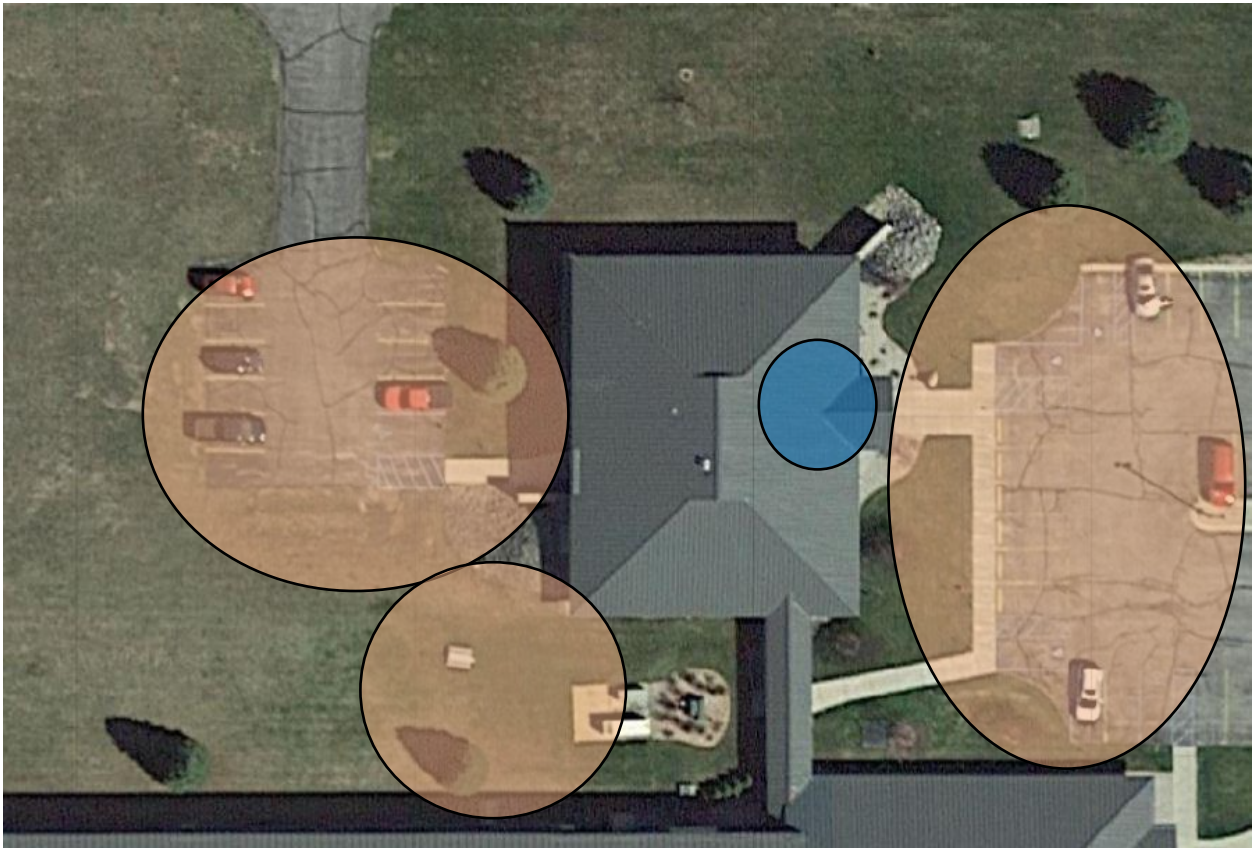
Selection criteria will include, but will not be limited to the following:

1. Qualifications and experience of the company(s) with projects of similar size and function.
2. Qualifications and experience of the project manager and other key personnel.
3. Approach to the project including preliminary schedule, bidding process and price, quality assurance system, and communication procedures.
4. 24 hour/7 days week repair, parts service, and online software support.
5. How user-friendly and easy is the installation on computer software?
6. Willingness and availability to work with GTCRC.

THE FOLLOWING IMAGES ARE BUILDINGS THAT REQUIRE MONITORING OF BOTH THE INTERIOR AND EXTERIOR WITH CAMERAS. PLEASE INDICATE EACH CAMERA LOCATION THAT WILL BE INSTALLED ON EACH IMAGE



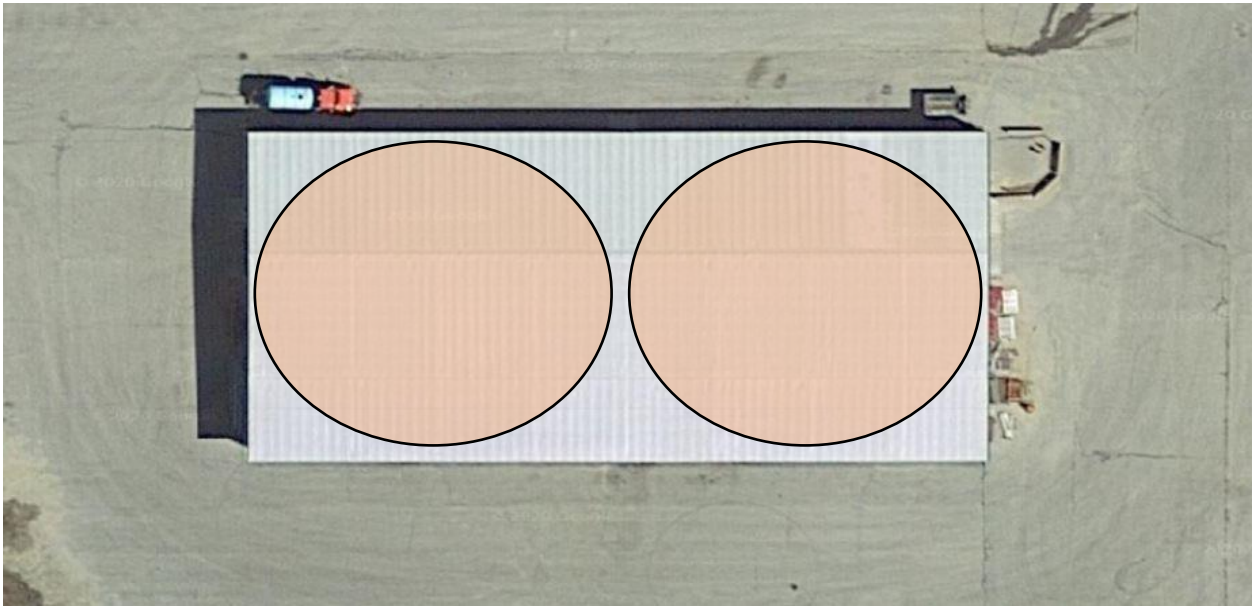
1881 Lafranier, Traverse City Location



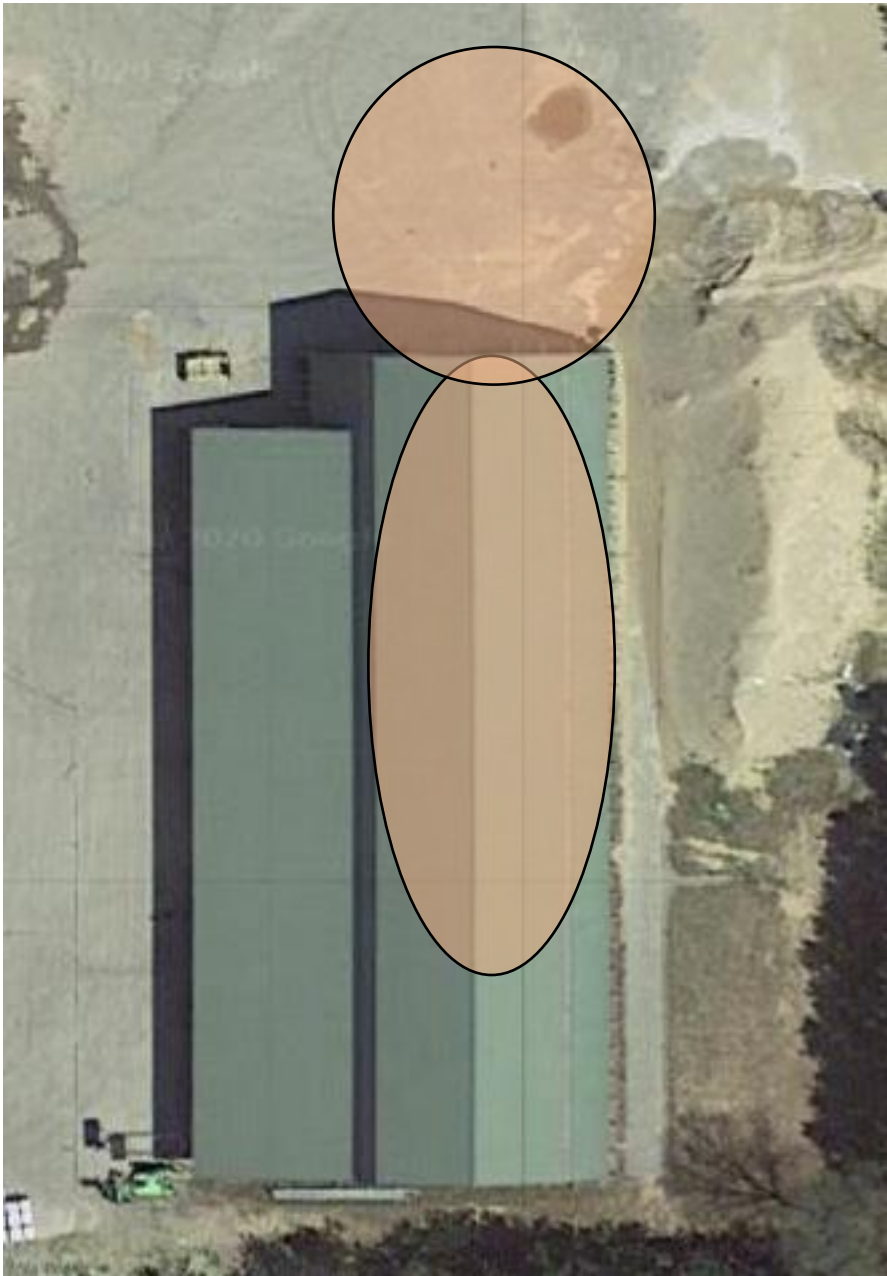
Building A camera map



Building B Camera Map



Building C Camera Map



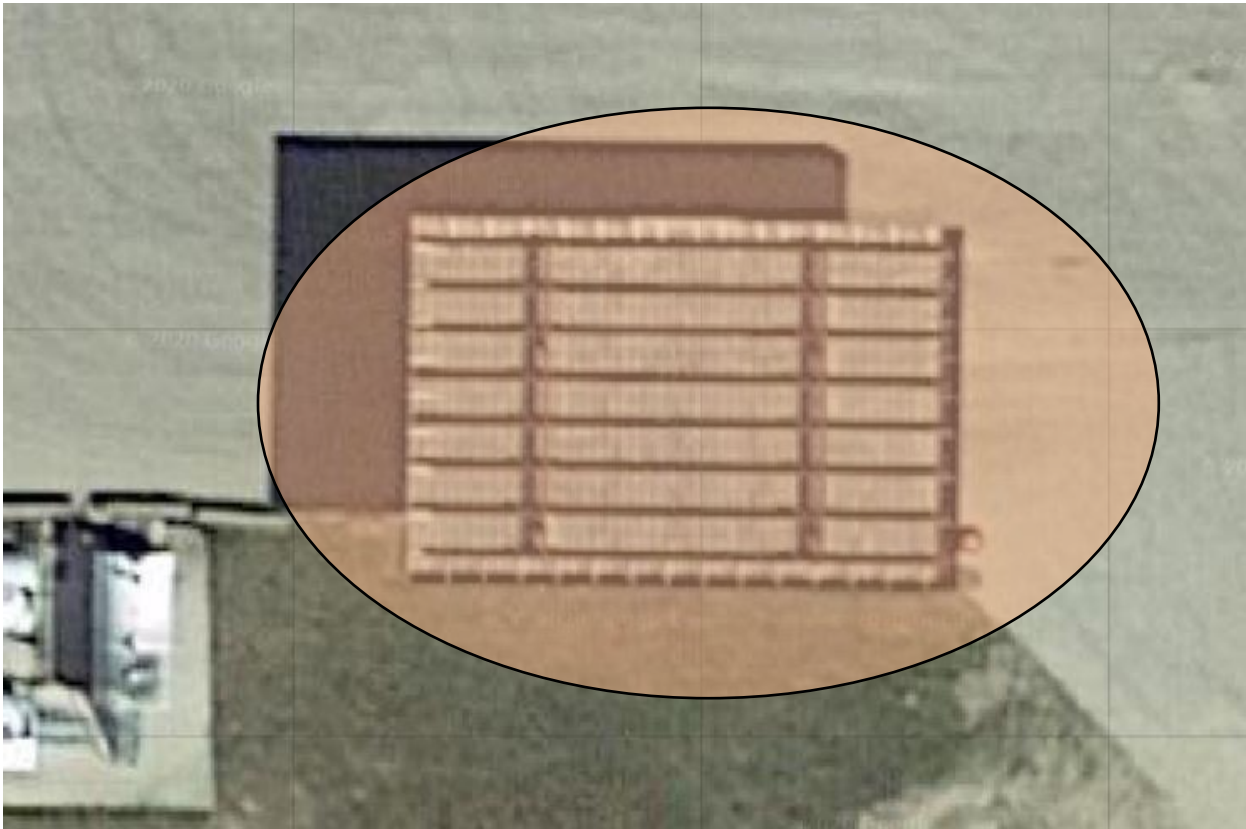
Salt Barn Camera Map



Front Gate Camera Map



Rear Gate Camera Map

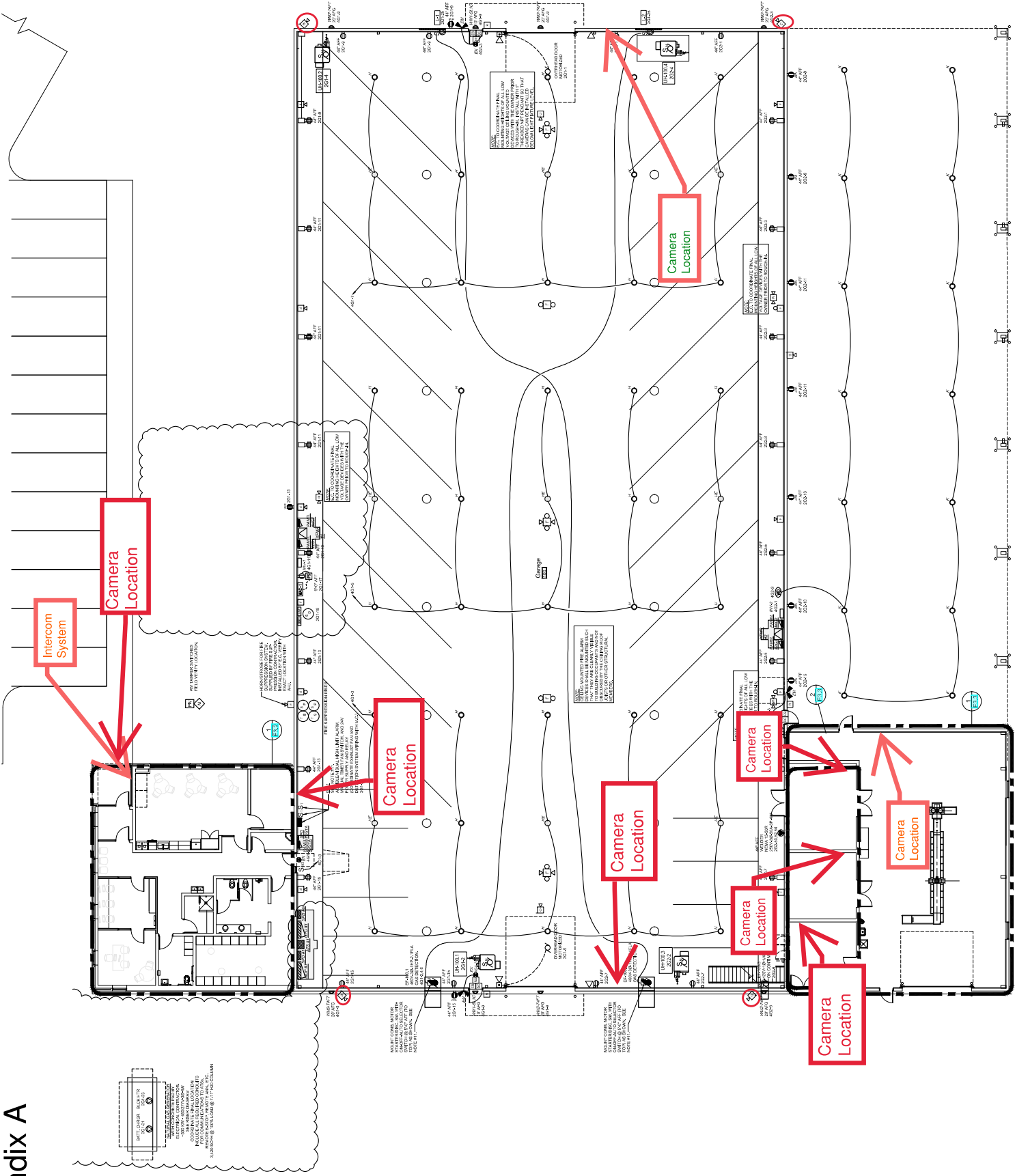


Fuel Island Camera Map



2408 M-113, Kingsley Facility

See Appendix A, B, and C for the other Kinsley Facility Camera Locations.



Appendix B

2" UNDERGROUND SCHEDULE 40
PIPE, 10' LONG, 10' DIA.
AND 4" SWEEPS TO SERVER
ROOM 8110.

MECH.

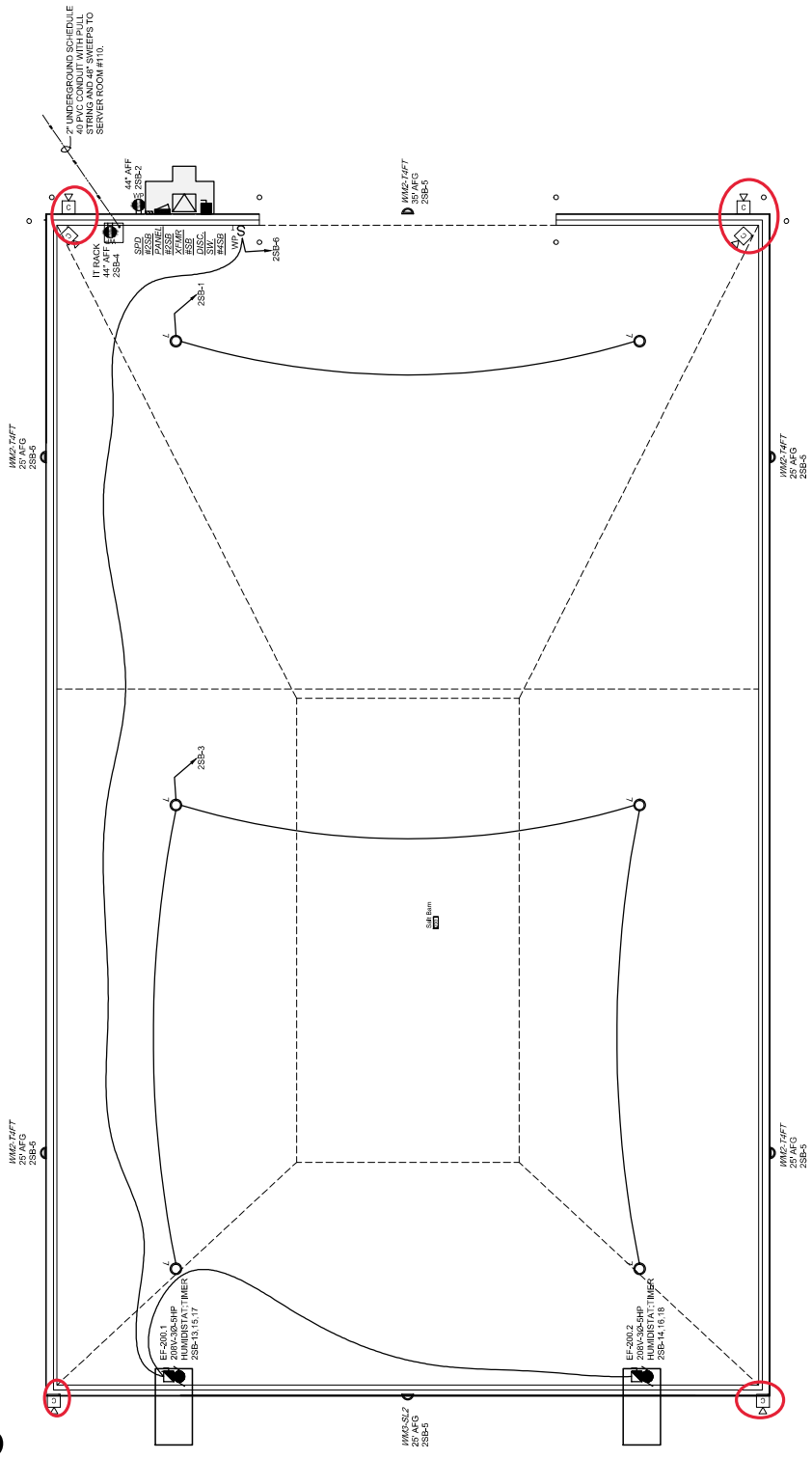
Wash Bay

Camera Location

Do You want a
Camera Here?

Camera
Location

Appendix C



1 Salt Barn Electrical Floor Plan

SCALE: 1/8" = 1'-0"

PLEASE ATTACH YOUR BID PRICE WITH LABOR AND MATERIAL WITH WARRANTY LENGTH AS WELL AS THE TOTAL NUMBER OF CAMERAS BEING USED. BASE BID SHALL BE FOR THE MINIMUM NEEDED TO ACCOMPLISH THE PROJECT ANY ADDITIONAL RECOMMENDED HARDWARE SHOULD BE DETAILED INDIVIDUALLY AND PRICED IN A SUPPLEMENTAL BID FORM.